



## Jointing Element

### BKL

- + Joint integrated in concrete manholes
- + Polystyrene supporting element
- + Joint system F
- + Resistant to 0.5 bar

#### **BKL Jointing Element – for the connection of clay pipes to concrete manholes and road gullies**

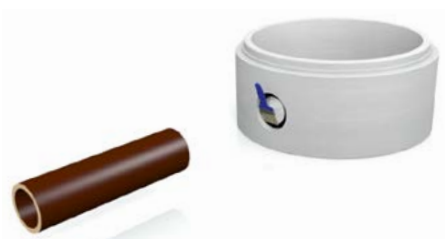
The BKL Jointing Element is integrated into concrete manholes or road gullies (socket L, joint system F) when manufactured.

To get the necessary space for installation, the BKL Jointing Element is installed together with a polystyrene supporting element.

## INSTALLATION



Remove polystyrene from socket.

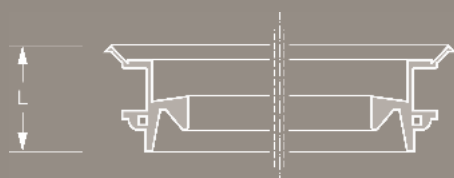


Apply lubricant to BKL joint.



Push pipe into socket.

## DESCRIPTION



## TECHNICAL SPECIFICATION

BKL Jointing Element including polystyrene supporting element according to DIN EN 295-4 for the connection of clay pipes (joint system F) to concrete manholes or road gullies according to DIN 4034 and DIN EN 1917.

DN \_\_\_\_\_

Article Number \_\_\_\_\_  
 \_\_\_\_\_ Qty \_\_\_\_\_ Price/Unit \_\_\_\_\_ Total

Manufacturer:	MÜCHER DICHTUNGEN®, D-50226 Frechen, T +49 2234 928 03-0, F-55
Pressure Tightness:	0.5 bar water
Sealing Material:	EPDM rubber according to DIN EN 681-1
Temperature Resistance:	-40°C to +120°C, temporary max. temperature +160°C
Standard/Approval:	DIN EN 295-4, CE06



## PRODUCT RANGE

BKL JOINTING ELEMENT				
Article Number	Reference	L Length (mm)	resistant to (bar)	Weight (kg)
36065150	BKL DN 150 incl. supporting element type 1	38	0,5	0,2
36065151	BKL DN 150 incl. supporting element type 2	38	0,5	0,2
36065200	BKL DN 200 incl. supporting element	38	0,5	0,3